



Geometric Filet Coaster

Designed by Julie A. Bolduc

This coaster is the first in a series of coasters which will have geometric designs. If made with worsted weight yarn, you could use this in an afghan. You could use this as a panel in a baby afghan as well.

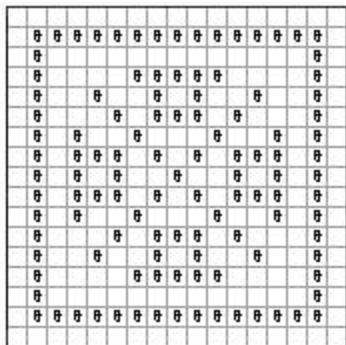
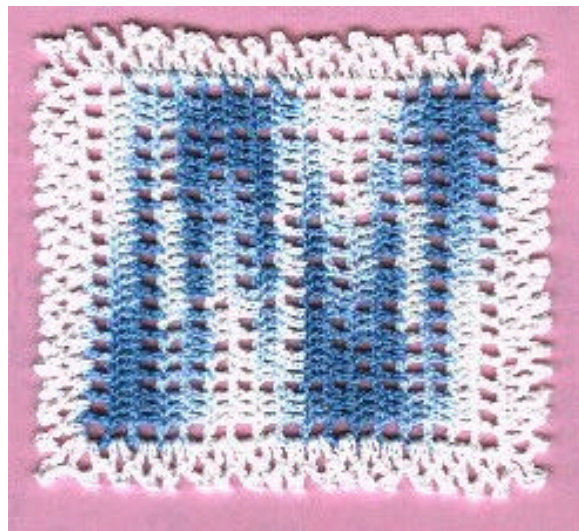
Materials Needed:

Southmaid size 10 crochet cotton, Shaded Blues
 Size 7 Steel Crochet Hook
 Tapestry needle

Gauge: =12 dc per inch 4 rows per inch with a size 7 hook

Finished Size: 5" x 4 1/4"

Skill Level: Beginner



18 bars, 17 blocks

Instructions

Ch 39, dc in 6th ch from hook then

follow chart reading from the right to the Left on the Odd numbered rows. And from Left to Right on the even numbered rows. At the end of each row, ch 4 turn. After you are done with the chart, fasten off shaded blues.

Tie on white and work the following in around.

Tie white thread onto top left corner sp. Work the fol in this sp. (Ch7, slst in 3rd ch from hook, ch1, dc, ch5, slst in 3rd ch from hook,

ch2, dc, ch4, slst in 3rd ch from hook, ch 1, dc.) Work the following in each sp down the left side, bottom, right side, and top. (dc, ch4, slst in 3rd ch from hook, ch1, dc). Work the following in each of the the corner spaces. (dc, ch4, slst in 3rd ch from hook, ch1, dc, ch5, slst in 3rd ch from hook, ch2, dc, ch4, slst in 3rd ch from hook, ch1, dc). Fasten off. Weave ends into work.

Copyright © 1998 by Julie A. Bolduc f108004

From the Crochet Pattern Collection of the JPF Crochet Club <http://www.jpfun.com/>

Please do not link to this file directly from your web site, link to the page where the link to this file originates.

This pattern is for personal use only, not for resale.